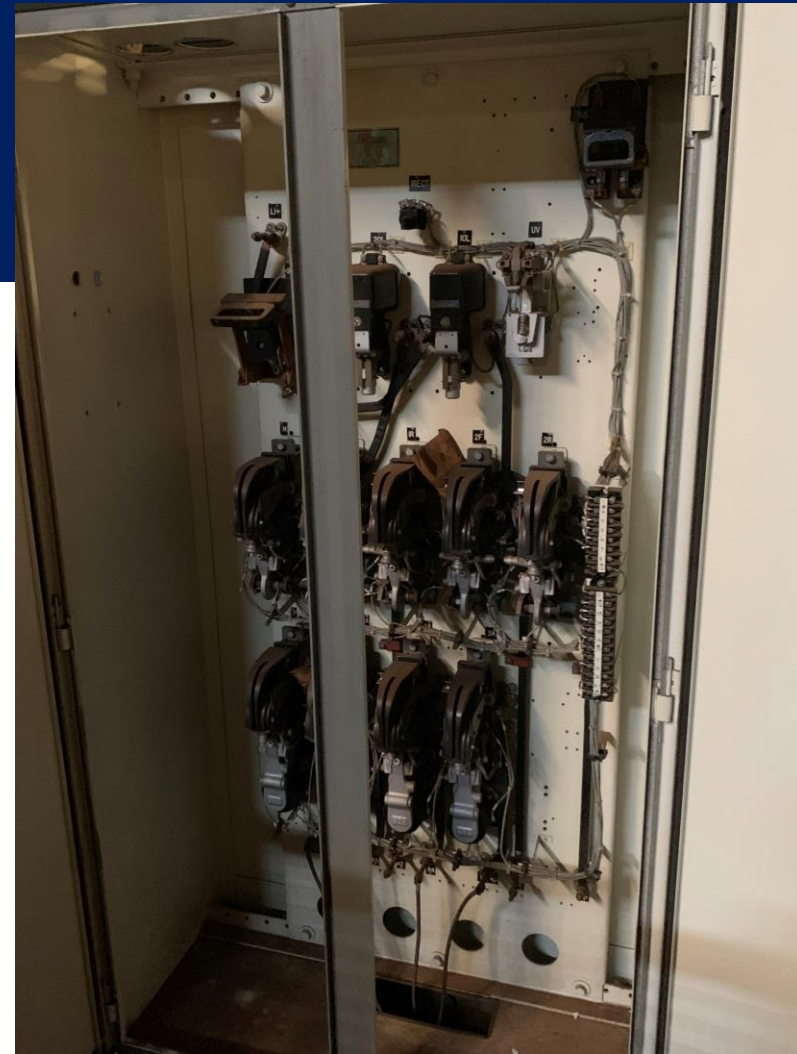


# Crane Controls Available

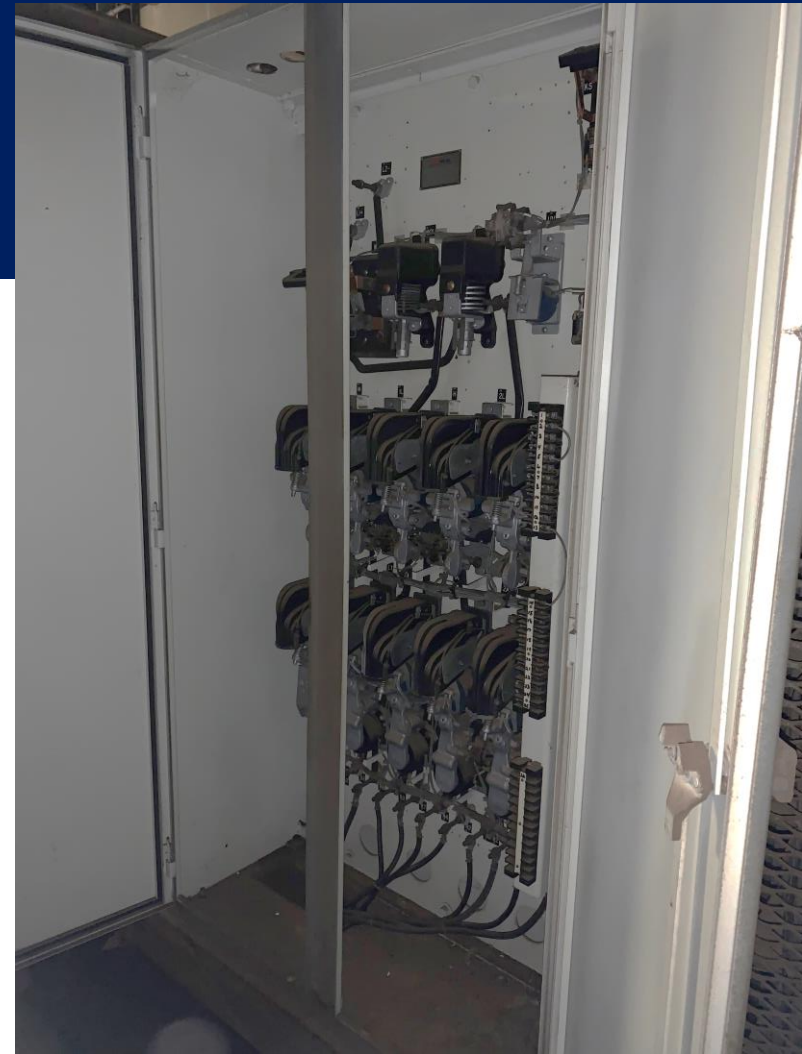


TDI Reference #64449



(2) Nema Size 3, 10 HP, 230 Volt DC, Cutler Hammer Trolley Control Panel, Front Wired, 5-Speed, 900 Series Contactors, mounted in Enclosure, complete with resistors mounted in fabricated steel racks





(2) Nema Size 4, 33 HP, 230 Volt DC, Cutler Hammer Hoist Control Panel, Front Wired, 5-Speed, 900 Series Contactors, Dynamic Lowering, Mounted in Enclosure, complete with resistors mounted in fabricated steel racks



Nema Size 5, 65 HP, 230 Volt DC, Cutler Hammer Bridge Control Panel, Front Wired, 5-Speed, 900 Series Contactors, with BR Relay & Resistor (for 16" General Electric Shunt Brake Coil), mounted in Enclosure, complete with resistors mounted in fabricated steel racks



Nema Size 6, 600 Amp, 230 Volt DC, Cutler Hammer Manual Magnetic Disconnect Switch, Front Wired, mounted in Enclosure